



G6

TRANSFORMING SINGLE-GAS DETECTION WITH CONNECTIVITY

Get ahead of your workplace hazards, drive to zero incidents and uplevel your operations with the most comprehensive, cost-effective and connected single-gas detector available—G6.

G6 gives you:

- Faster response time through accurate incident and worker location
- Reduced costs and increased operational efficiency with less lost devices, false alarms and IT infrastructure
- Trustworthy data and instant insights—like easy-to-read visuals for high alarm rates or low compliance—so you can act quickly
- Long-lasting design with over-the-air updates to futureproof your investment

It's what makes G6 the new standard in single-gas detection. An innovative—and economical—solution for improving safety and operational performance in the modern industrial workplace.

Features



Direct-to-cloud connectivity



Integrated GPS location technology



Single gas detection



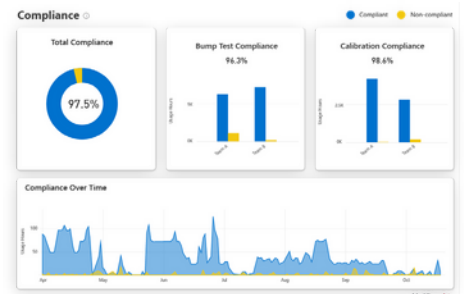
Rechargeable battery



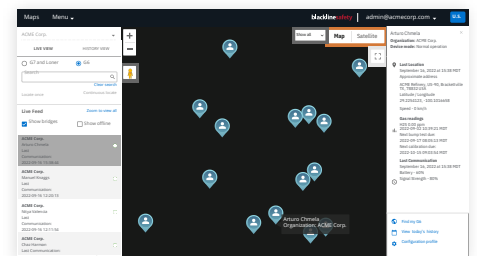
Reduced false alarms



Data-rich reporting



Blackline Analytics essential reporting



Blackline Live platform



DETAILED SPECIFICATIONS

Standard features

Single-gas monitoring - CO, H2S, O2, or SO2
 Direct-to-cloud connectivity
 Over-the-air configurations
 Automatic over-the-air updates
 Integrated GPS location technology
 Find My G6
 Up to 1-year battery life
 Rechargeable battery
 Automatic bump tests and calibrations through G6 Dock

Standard safety features

Device location, gas readings, bump and calibration data, and alarms automatically uploaded daily
 High gas notification
 Low gas notification
 Short-term exposure limit (STEL) notification
 Bump test and calibration notification
 Bump test and calibration failure notification

Size & weight

Size: 71mm x 110mm x 37mm (2.8" x 4.3" x 1.5")
 Weight: 146g (5.2 oz)

User interface

240 x 320 pixel graphical, high contrast, 6-bit color liquid crystal display
 Menu system and power-on driven by threebutton keypad
 Multi-language support: EN, FR, ES, DE, IT, NL, PT

User notification

Visual: Color display and multi-color lights on top and side
 Sensory: Vibrating
 Audible: ~95 dB @ 30 cm (11.8")

Power & battery

Rechargeable Li-ion battery: 1200 mAh
 Battery life: Up to 1 Year at 20°C (68°F) under normal usage
 Charge time: 4 hours

Approvals

SAR, RoHS, CE, RCM
 FCC ID: W77G62 IC: 8255A-G62
 Contains FCC ID: XPY1EIQ24NN, IC: 8595A-1EIQ24NN
 Canada & USA: Class I Division 1 Group A,B,C,D T4;
 Class I Zone 0 AEx ia IIC T4; Ex ia IIC T4 Ga
 IECEx: Ex ia IIC T4 Ga
 ATEX: Ex ia IIC T4 Ga
 UKCA: Ex ia IIC T4 Ga

Location technology

GPS Radio: 48-channel high sensitivity Assisted-GPS: Yes
 GPS Accuracy: ~5 m (16 ft) Outdoors
 Location update frequency: During high urgency events and once per day

Sensor Specifications

GAS	SENSOR TYPE	RANGE	RESOLUTION
CARBON MONOXIDE (CO)	Electrochemical	0–500 ppm	1 ppm
HYDROGEN SULFIDE (H2S)	Electrochemical	0–100ppm	0.1 ppm
OXYGEN (O2)	Electrochemical	0–25% vol	0.1% vol
SULFUR DIOXIDE (SO2)	Electrochemical	0–100 ppm	0.1 ppm

Cellular Communication

LTE-M and NB-IoT

Environmental

Storage temperature: -30°C to 60°C (-22°F to 140°F)
 Operating temperature: -20°C to 55°C (-4°F to 131°F)
 Charging temperature: 0°C to 45°C (32°F to 113°F)
 Ingress Protection: Designed to meet IP67

Warranty

Four-year limited warranty

Blackline Live web application

Cloud-hosted safety monitoring web application is customizable for every customer requirement
 Includes compliance dashboard, map, user roles, device configurations, notification setups, and essential reporting

All specifications subject to change without notice.