

PAL WANDERING PREVENTION



Safety for Alzheimer's, Dementia & Autism

Alerting and GPS locating system for those who wander

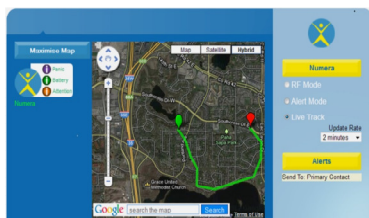
Designed specifically for the "at-risk" market, in particular those that are prone to wandering (i.e.: Alzheimer's, Dementia & Autism), the PAL Wandering Prevention System provides caregivers and loved ones a greater degree of safety and peace of mind, day and night.

With a unique lockable watch strap which requires a special tool to unlock, the PAL GPS Watch is the same size and look as a normal digital wrist watch. The key difference is that the watch has the ability to provide highly accurate GPS locates when the individual wearing the watch wanders outside their Safe Zone, which is controllable by the Portable Receiver.

When the watch is within approx. 30m indoors or 100m outdoors of the Portable Receiver, the watch is being monitored via Radio Frequency (RF) signalling and creates a Safe Zone around the watch. This allows the watch to go almost (30) days in between charges. Once the watch exits the Safe Zone (wandering situation), the Portable Receiver will generate an alert, along with a text and email message being sent out, which includes a Google maps link with the GPS locate of the watch's current location.

The secure, personal web portal will then allow you the ability to track the watch as quickly as every (2) minutes to ensure a quick and safe return of the individual.

When safety and peace of mind is important



Lockable Watch Strap

Requires special tool to unlock. Ensures the watch can not be removed by the individual, if preferred.

Long Battery Life

When in RF mode, the battery on the watch can last up to (30) days in-between charges

Three Methods of Alert Notification

When a wandering situation occurs, an email and text message will be sent out, as well as notification on the personal web portal

Detailed GPS Tracking

When in Live Track mode, the watch is able to provide a new GPS locate as quickly as every (2) minutes

Panic Button

The watch has a Panic button on the side to allow for an immediate request for assistance, along with providing a current GPS locate.

Solid Construction

The watch is water resistant, along with scratch & shock proof and comes with a One Year warranty.

Latest Technology

The Wandering Prevention system uses the latest in RF/GSM/GPS technology

Personal Privacy

GPS tracking is only available once a wandering situation has occurred